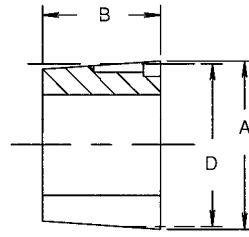
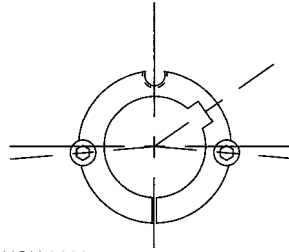


1008 THROUGH 3030



3535 THROUGH 5050

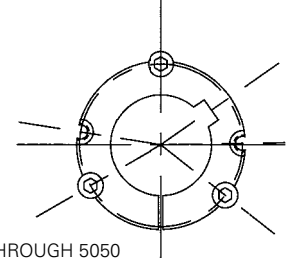


TABLE No. 1 BUSHING SPECIFICATIONS AND DIMENSIONS (INCHES)

BUSHING No.	A	B	D BOLT CIRCLE	CAP SCREWS		STOCK BORE RANGE			WRENCH TORQUE IN. LBS.	TORQUE CAP. LB. IN.	WT. (APX.) LBS.
				DIA.	LENGTH	MIN.	MAX				
							STD. KW.	SHALLOW KW.			
1008	1 25/64	7/8	1 21/64	1/4	1/2	1/2	7/8	1	55	1,200	.27
1108	1 5/11	7/8	1 29/64	1/4	1/2	1/2	1	1 1/8	55	1,300	.33
1210	1 7/8	1	1 3/4	3/8	5/8	1/2	1 1/4	1 1/4	175	3,600	.61
1215	1 7/8	1 1/2	1 3/4	3/8	5/8	1/2	1 1/4	1 1/4	175	3,550	.80
1610	2 1/4	1	2 1/8	3/8	5/8	1/2	1 1/2	1 5/8	175	4,300	.90
1615	2 1/4	1 1/2	2 1/8	3/8	5/8	1/2	1 1/2	1 5/8	175	4,300	1.2
2012	2 3/4	1 1/4	2 5/8	7/16	7/8	1/2	1 7/8	2	280	7,150	1.7
2517	3 3/8	1 3/4	3 1/4	1/2	1	1/2	2 1/4	2 1/2	430	11,600	3.5
2525	3 3/8	2 1/2	3 1/4	1/2	1	3/4	2 1/4	2 1/2	430	11,300	4.9
3020	4 1/4	2	4	5/8	1 1/4	15/16	2 3/4	3	800	24,000	6.5
3030	4 1/4	3	4	5/8	1 1/4	15/16	2 3/4	3	800	24,000	9.2
3535	5	3 1/2	4.83	1/2	1 1/2	1 3/16	3 1/4	3 1/2	1000	44,800	14.0
4040	5 3/4	4	5.54	5/8	1 3/4	1 7/16	3 5/8	4	1700	77,300	22.0
4545	6 3/8	4 1/2	6.13	3/4	2	1 15/16	4 1/4	4 1/2	2450	110,000	30.0
5050	7	5	6.72	7/8	2 1/4	2 7/16	4 1/2	5	3100	126,000	38.0

TABLE No. 2 STOCK BUSHING BORES

	1008	1108	1210	1215	1610	1615	2012	2517	2525	3020	3030	3535
1/2	X	X	X	X	X	X	X	X	-	-	-	-
9/16	X	X	X	X	X	X	X	X	-	-	-	-
5/8	X	X	X	X	X	X	X	X	-	-	-	-
11/16	X	X	X	X	X	X	X	X	-	-	-	-
3/4	X	X	X	X	X	X	X	X	X	-	-	-
13/16	X	X	X	X	X	X	X	X	X	-	-	-
7/8	X	X	X	X	X	X	X	X	X	-	-	-
15/16	X	X	X	X	X	X	X	X	X	X	-	-
1	X	X	X	X	X	X	X	X	X	X	-	-
1 1/16	-	X	X	X	X	X	X	X	X	X	-	-
1 1/8	-	X	X	X	X	X	X	X	X	X	-	-
1 3/16	-	-	X	X	X	X	X	X	X	X	X	-
1 1/4	-	-	X	X	X	X	X	X	X	X	X	-
1 5/16	-	-	-	-	X	X	X	X	X	X	X	-
1 3/8	-	-	-	-	X	X	X	X	X	X	X	-
1610	1615	2012	2517	2525	3020	3030	3535	4040	4545	5050		
1 7/16	X	X	X	X	X	X	X	X	-	-	-	-
1 1/2	X	X	X	X	X	X	X	X	-	-	-	-
1 9/16	X	X	X	X	X	X	X	X	-	-	-	-
1 5/8	X	X	X	X	X	X	X	X	-	-	-	-
1 11/16	-	-	X	X	X	X	X	X	-	-	-	-
1 3/4	-	-	X	X	X	X	X	X	-	-	-	-
1 13/16	-	-	X	X	X	X	X	X	-	-	-	-
1 7/8	-	-	X	X	X	X	X	X	-	-	-	-
1 15/16	-	-	X	X	X	X	X	X	X	-	-	-
2	-	-	-	X	X	X	X	X	X	X	-	-
2 1/16	-	-	-	X	X	X	X	-	-	-	-	-
2 1/8	-	-	-	X	X	X	X	X	-	-	-	-
2 3/16	-	-	-	X	X	X	X	X	X	-	-	-
2 1/4	-	-	-	X	X	X	X	X	-	-	-	-
2 5/16	-	-	-	X	X	X	X	X	-	-	-	-
2 3/8	-	-	-	X	X	X	X	X	X	-	-	-
2 7/16	-	-	-	X	X	X	X	X	X	X	-	-
2 1/2	-	-	-	X	X	X	X	X	-	X	-	-
2 9/16	-	-	-	-	X	X	-	X	-	-	-	-
2 5/8	-	-	-	-	X	X	X	X	-	-	-	-

TABLE No. 2 (CONT'D.) STOCK BORES

	3020	3030	3535	4040	4545	5050
2 11/16	X	X	X	X	-	-
2 3/4	X	X	X	X	X	-
2 13/16	X	X	-	X	-	-
2 7/8	X	X	X	X	X	-
2 15/16	X	X	X	X	X	X
3	X	X	X	X	X	-
3 1/16	-	-	X	-	-	-
3 1/8	-	-	X	X	X	-
3 3/16	-	-	X	X	X	-
3 1/4	-	-	X	X	X	-
3 5/16	-	-	X	X	-	-
3 3/8	-	-	X	X	X	X
3 7/16	-	-	X	X	X	X
3 1/2	-	-	X	X	X	-
3 9/16	-	-	-	X	-	-
3 5/8	-	-	-	X	X	X
3 11/16	-	-	-	X	X	-
3 3/4	-	-	-	X	X	-
3 13/16	-	-	-	X	-	-
3 7/8	-	-	-	X	X	X
3 15/16	-	-	-	X	X	X
4	-	-	-	X	X	X
4 1/8	-	-	-	-	X	-
4 3/16	-	-	-	-	X	-
4 1/4	-	-	-	-	X	X
4 3/8	-	-	-	-	X	X
4 7/16	-	-	-	-	X	X
4 1/2	-	-	-	-	X	X
4 7/8	-	-	-	-	-	X
4 15/16	-	-	-	-	-	X
5	-	-	-	-	-	X

TABLE No. 3 STANDARD KEYSEATS

BORE RANGE	KEYSEAT	BORE RANGE	KEYSEAT
1/2 - 9/16	1/8 X 1/16	2 5/16 - 2 3/4	5/8 X 5/16
5/8 - 7/8	3/16 X 3/32	2 13/16 - 3 1/4	3/4 X 3/8
15/16 - 1 1/4	1/4 X 1/8	3 3/8 - 3 3/4	7/8 X 7/16
1 5/16 - 1 3/8	5/16 X 5/32	3 7/8 - 4 1/2	1 X 1/2
1 7/16 - 1 3/4	3/8 X 3/16	4 5/8 - 5	1 1/4 X 5/8
1 13/16 - 2 1/4	1/2 X 1/4	-	-

1 3/8 Bore Bushings also available with 3/8 X 3/16 Kw.